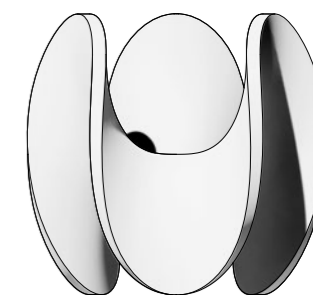


DIGITAL FABRICATION

a catalog of digital fabrication and
computation design, Toronto

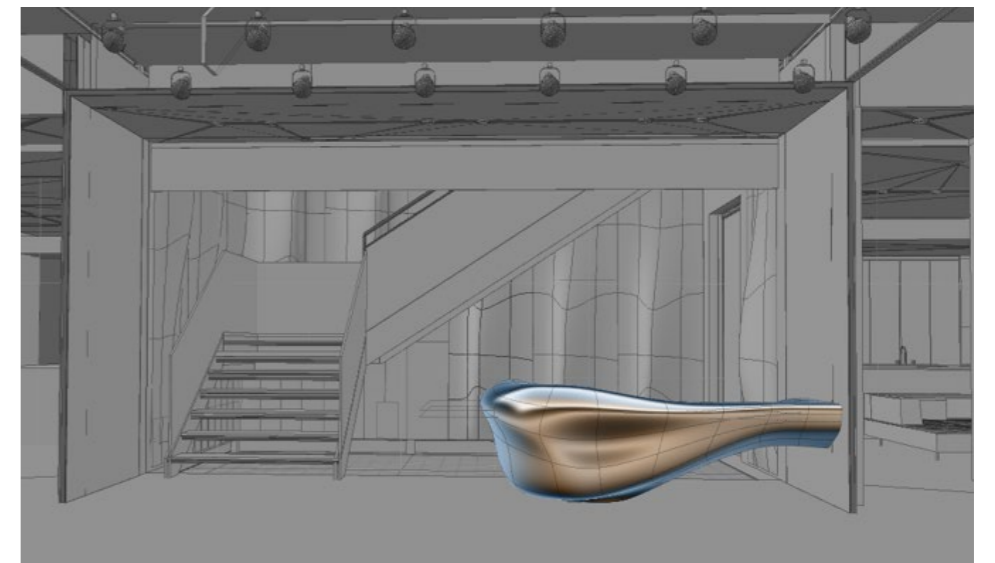


Manifold Lab



Computational Design

We are dominating the inspiration craft of design & fabrication through technology. Let's unleash the power of ideas with the .modern tools of a fast-paced digital world

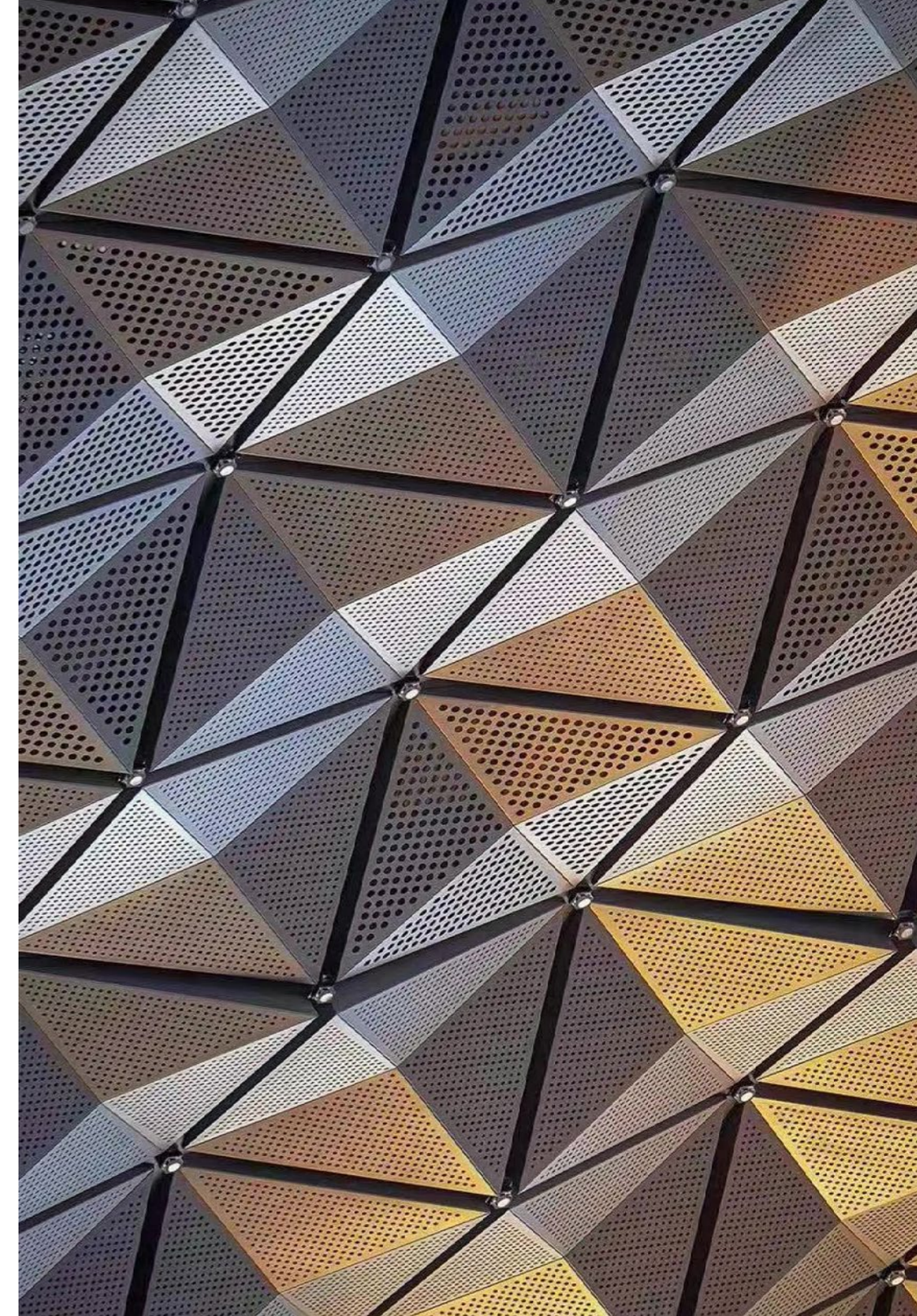
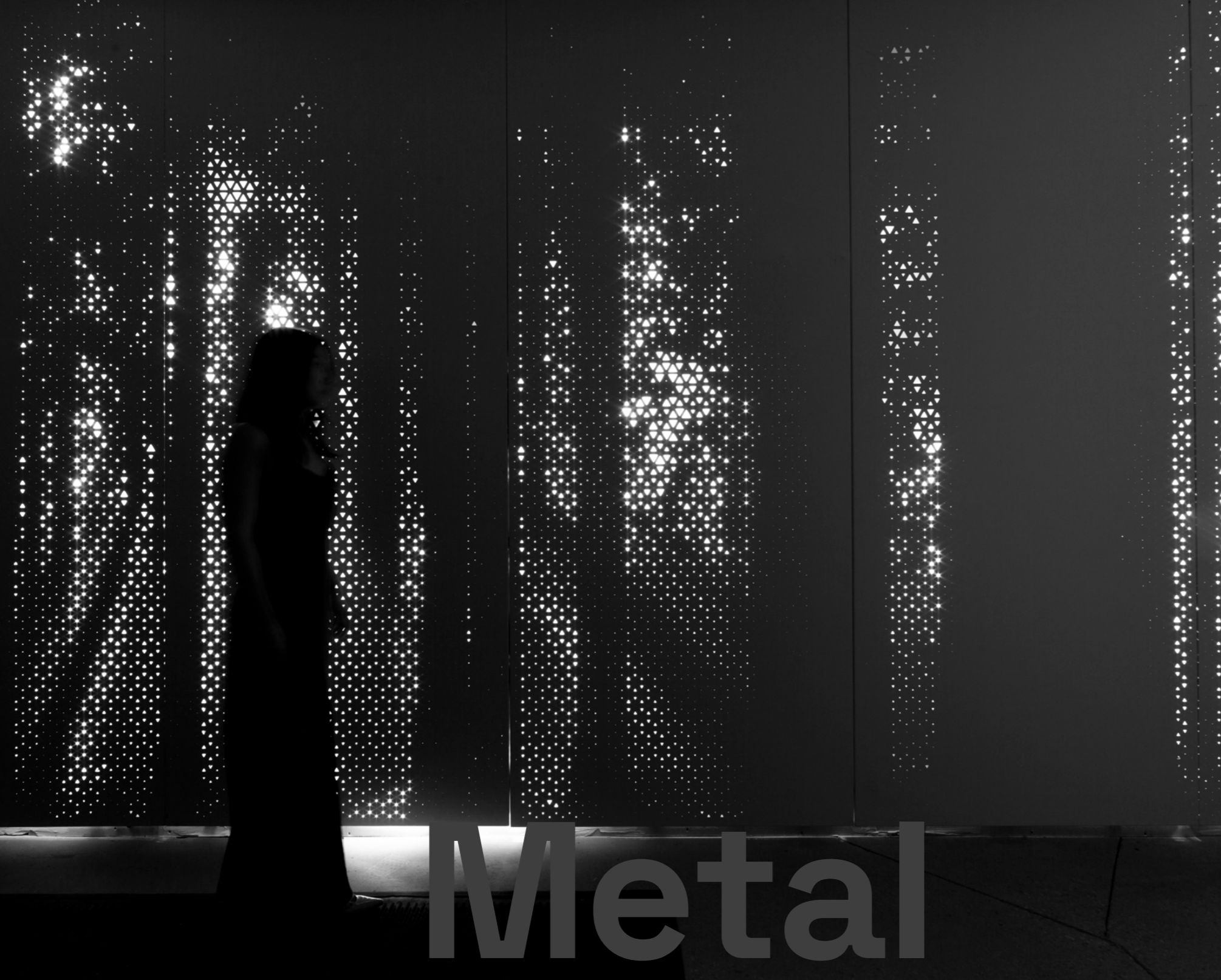


Digital Fabrication

Concept , Fabrication & Install : One Stop Solution

Working directly with a global network of digital fabrication factories, we provide highly sophisticated 3-dimensional fabrication using a variety of materials. All fabrications are delivered at factory pricing. The objective of helping architects & designers create highly complex spatial work is achieved conveniently at competitive pricing.

Our in-house team is made up of experts with international experiences and background in architectural digital fabrication & design. Carefully selected for their proficiency with parametric and generative design digital platforms, we work only with the best. We can turn designer sketches into 3D models and produce shop drawings that are ready for fabrication.



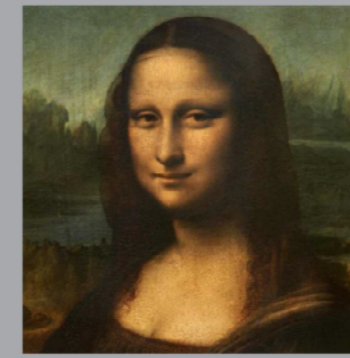
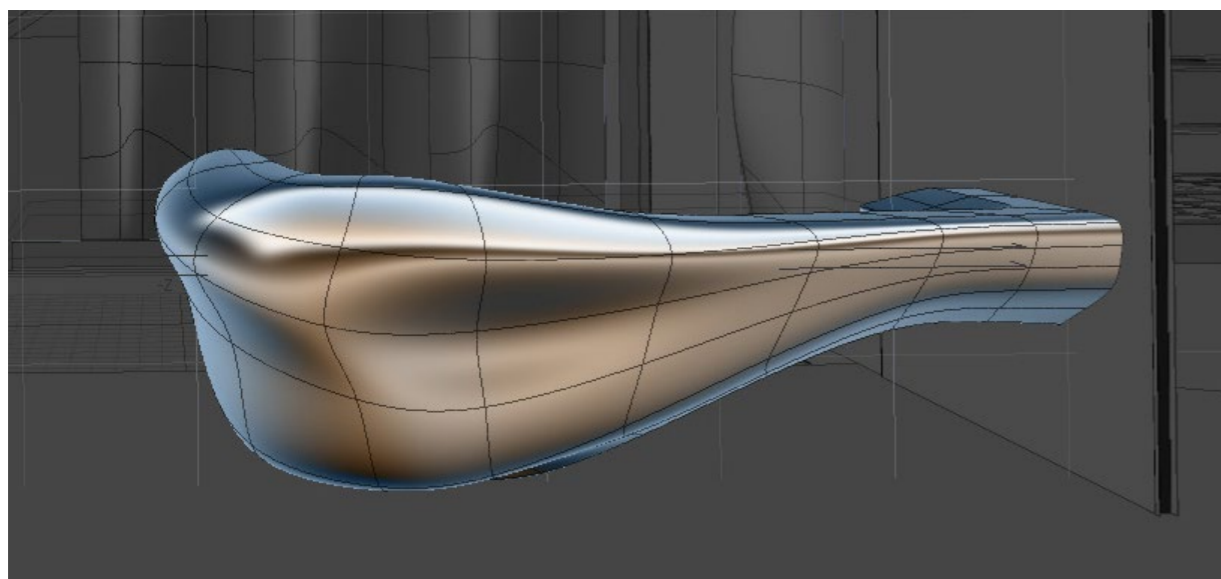
Featured Project: Gallery Walk

Fabrication Method : Laser Cut Powder Coated Aluminum

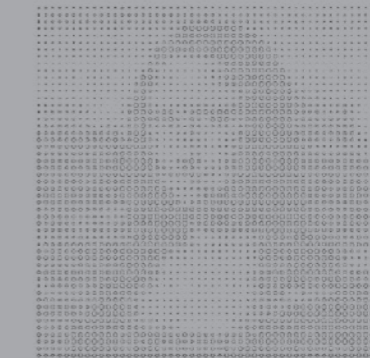
Manifold Perforated metal offers architects & designers create unique expressions for the facade, screens and interior walls. Developed by the Manifold crew, our image sampler algorithm converts your image into perforation. Double Curvature Bending is possible.

3D Stainless Steel Fabrication

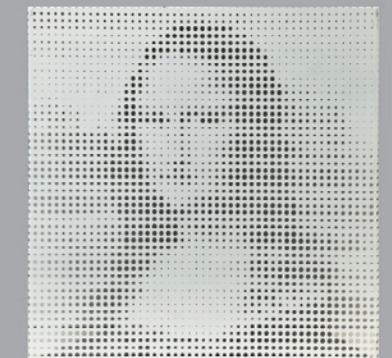
Fabrication Technology: Digital Cold or Hot Formed
Form Adaptation: Complex Double Curvature Surface
Material: Marine Grade 316L Stainless Steel or SS304
Finishing: Polished, Brushed or Stain



Image



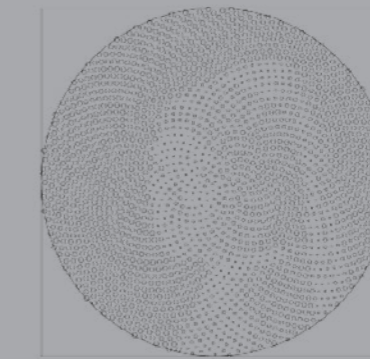
CAD



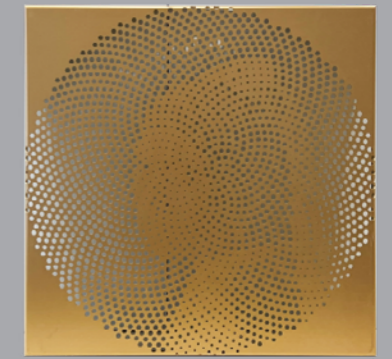
Fabrication



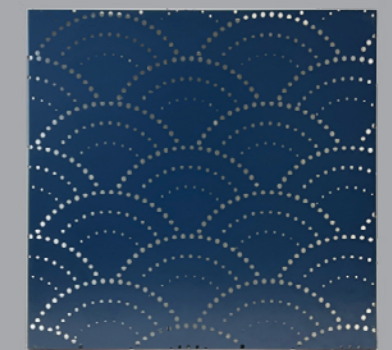
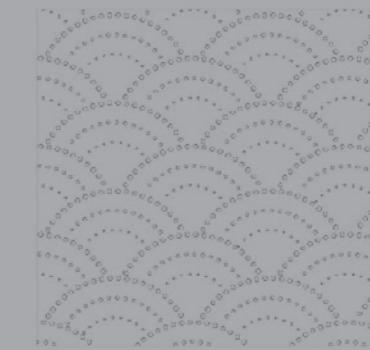
Image



CAD



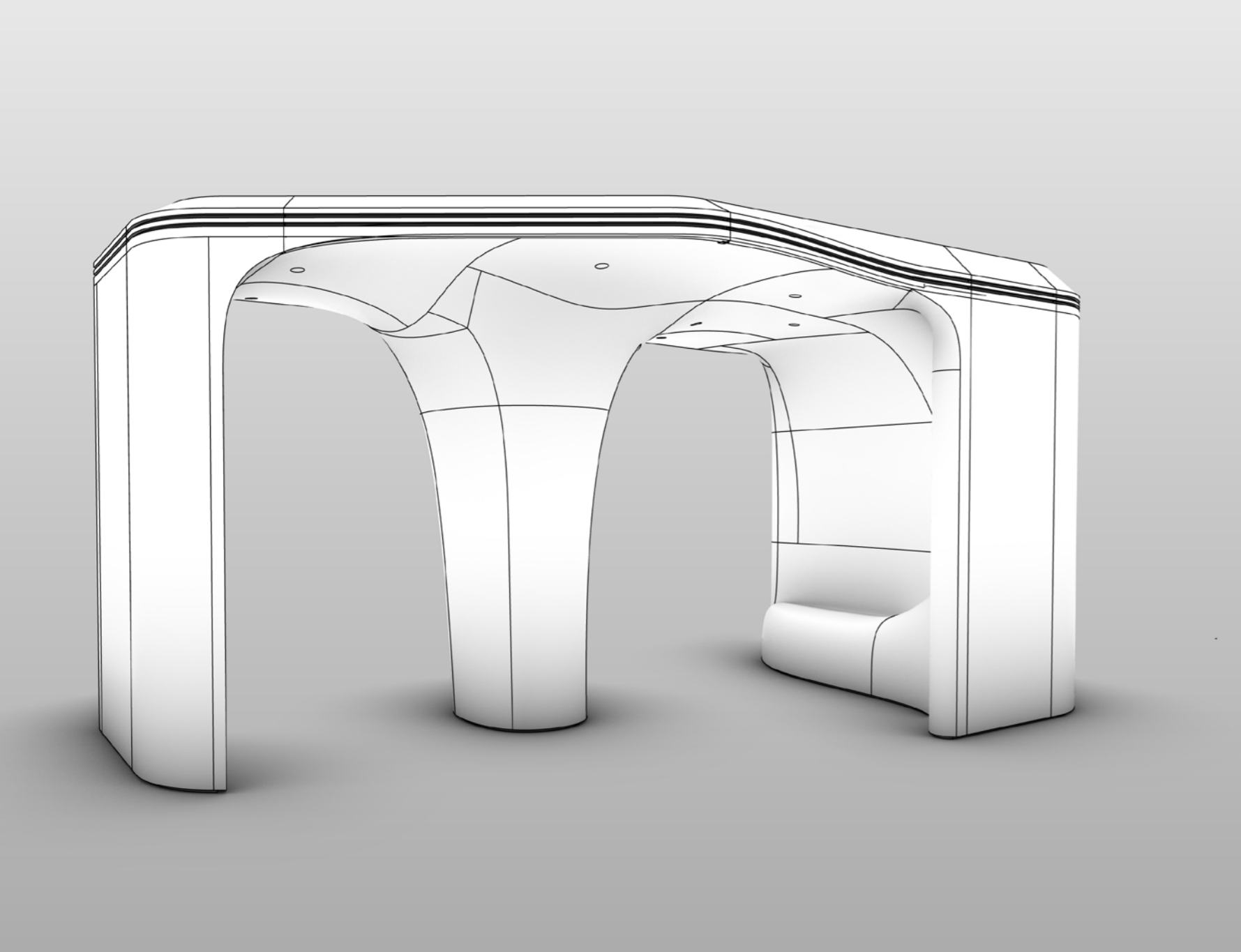
Fabrication



Metal Perforation Automation Program

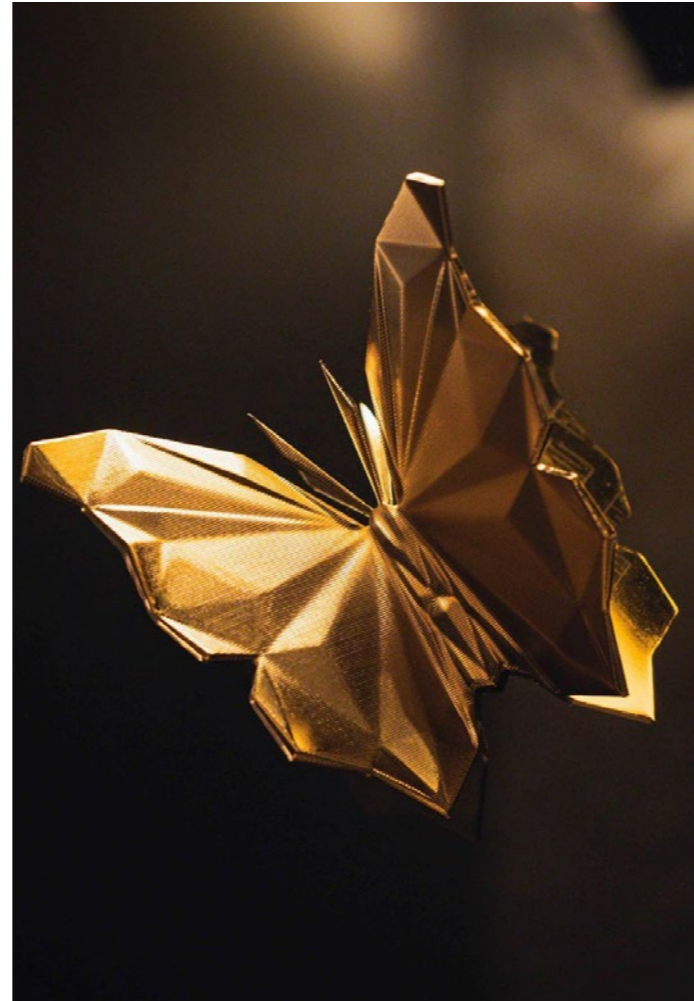
Turning any image or photo into perforated metal. For architects, landscape architects and interior designers, we

Fabrication Technology : Hole Punching, Laser Cutting, CNC, Bending
Material: Aluminium, Stainless Steel
Finishing: Powder Coating, FluroCarbon Coat, Gold Plating
Size : Custom Size,
~within W 1200mm Φ H3000mm.
max W1500 Φ H6000mm



3D Metal Fabrication

3D Digital Formed :Fabrication Technology
Form Adaption: Complex Double Curvature Surface
Material: Aluminum
Finishing: Powder Coated
Img Left: Concept
Upper right: Test Assembly before finishing
Bottom Right: Powder Coating



Project Spotlight : St. Thomas Yorkville

Year : 2023

Nestled in the heart of Yorkville, St. Thomas Yorkville stands as the epitome of precision and innovation in the realm of digital fabrication services. We transcend traditional boundaries by transcribing designers' visions into captivating details that extend beyond the constraints of two dimensions. Our meticulous process begins by transforming these visionary concepts into intricately detailed 3D shop drawings. Leveraging the prowess of cutting-edge robotics, we then execute the fabrication with precision, ensuring that nuance of the 3D design is replicated in the final product. The application of gold-plating finish, adding an extra layer of sophistication and refinement. At St. Thomas Yorkville, we redefine the possibilities of digital fabrication, merging artistry with state-of-the-art technology to bring elegance to every project.



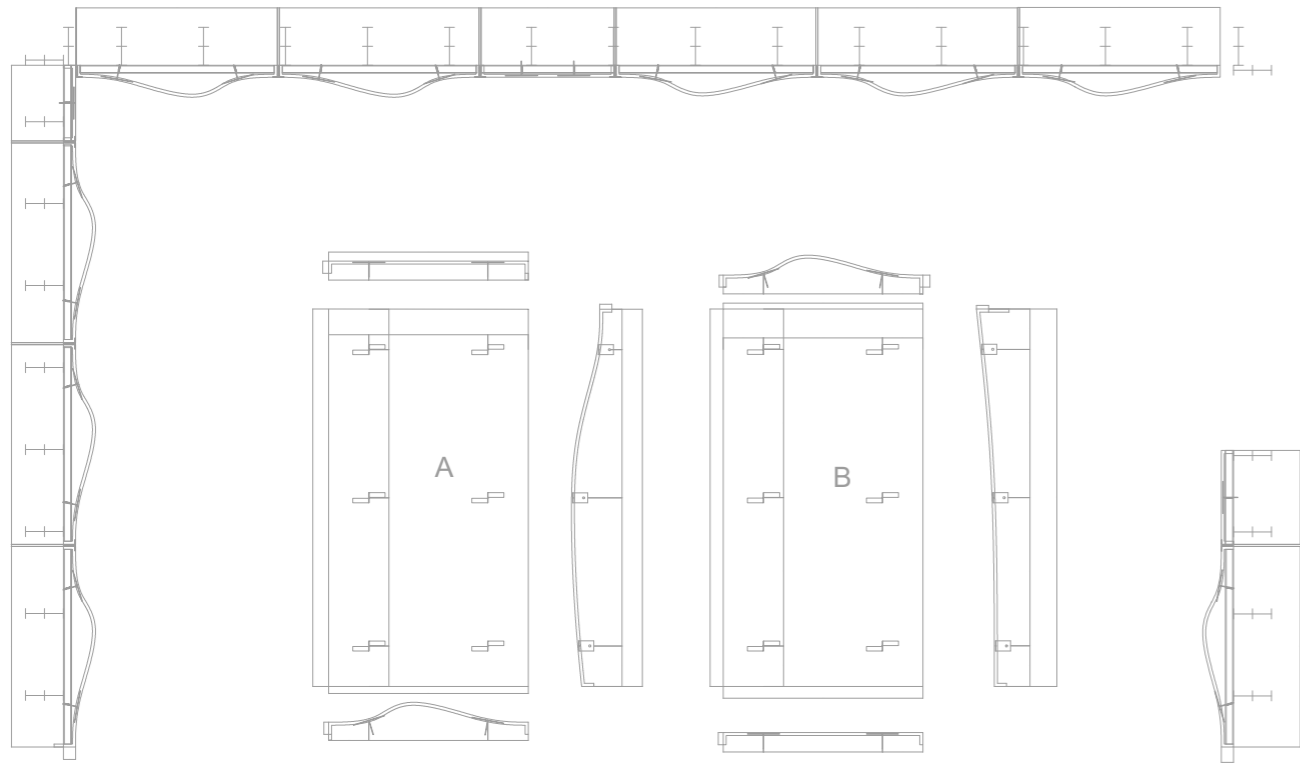
Gypsum

Featured Project : Nestwood Gallery

Fabrication Method: CNC & Mould

A versatile, sturdy, and lightweight material that stands out for its practical attributes. GFRG offering architects a canvas to sculpt three-dimensional spaces with unprecedented ease. GFRG excels in providing a balanced combination of strength and lightness, making it an excellent choice for architects and designers aiming to bring their spatial design concepts to fruition. The material's adaptability ensures a smooth transition between modules, facilitating the creation of structures with ease.





Glass Fiber Reinforced Gypsum
Formal Complexity: Single Curvature, Double Curvature
Seam: n/a
Max Size : Seamless



Marble

Featured Project : 3D Lightweight Marble Fabrication

Fabrication Method : CNC & Robotics

Embark on a journey of elegance with our marble collection, sourced directly from quarries and meticulously processed using state-of-the-art tools. Whether it's the precision of 3D sculpting or the finesse of articulating slabs, our craftsmanship reflects unparalleled quality. Explore our latest innovation – a proprietary lightweight 3D marble, offering structural integrity with an installation-friendly touch. Elevate your spaces with the beauty of dimensionality, uniquely crafted for both aesthetics and practicality.

Experience the innovation firsthand with our 3D marble samples, available upon request. Redefine luxury with our exclusive marble solutions.





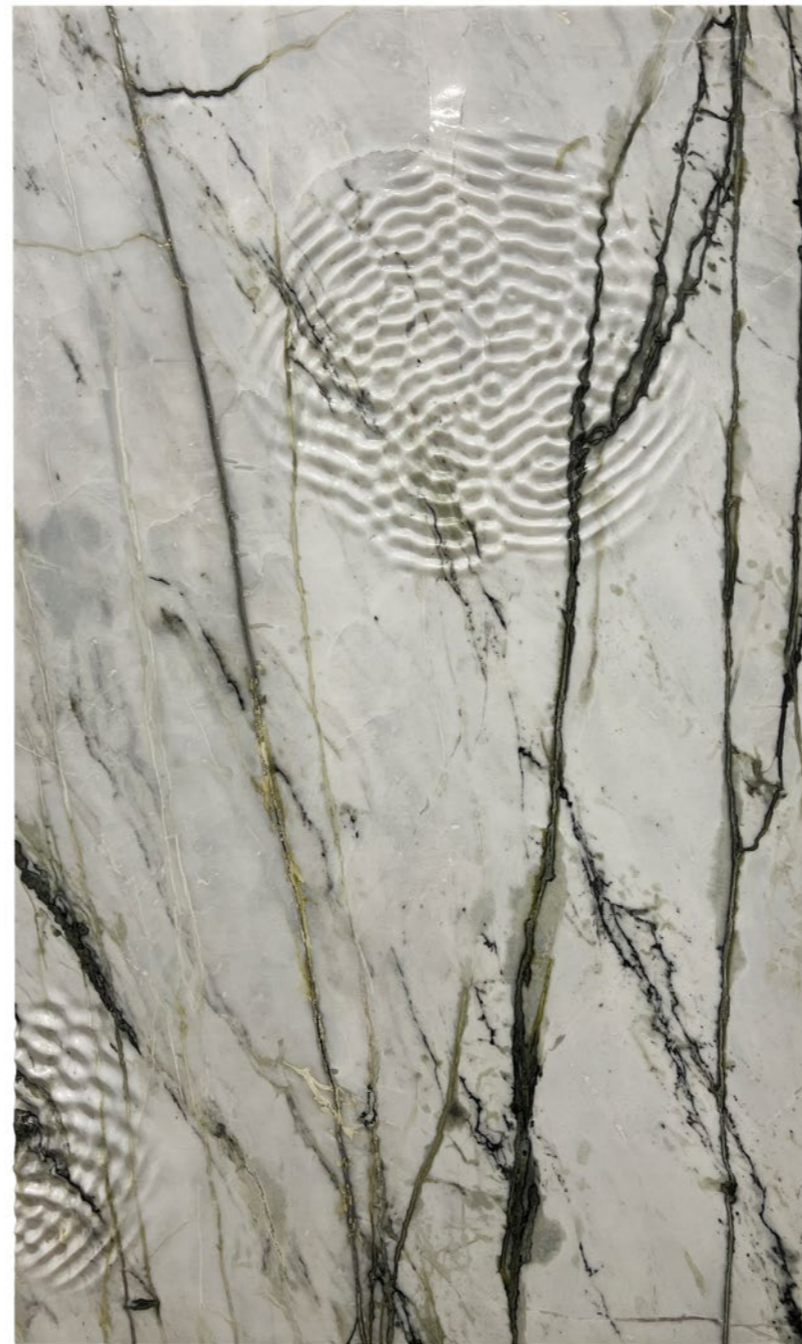
Fireplace Mantel

Designed by Manifold Lab, our fireplace mantel marbles are cut to achieve a continuous pattern. Also comes with vibrant markings that flow in the direction of the fireplace opening. Your exquisite fireplace accentuates the homely feel and warmth of your space.

*Custom size & specs available upon request.

Measurements:
Width: 59" (1500mm)
Height: 44" (1118mm)
Depth: 7" (178mm)

Internal Measurements:
Width: 42" (1067mm)
Height: 35.5" (902mm)



Custom Profile Marble
Natural Pattern: Continuous
Maximum Height: 3300mm (11')
Depth: 18mm (3/4") - 25mm (1")
Finish: Polished or Honed



Fibreglass



Versatile and economical, fibreglass is an excellent material for creating highly complex materials without breaking the bank. With the right design, fibreglass makes an instant statement for any commercial interior. Typical applications such as reception desks, feature walls, shelves and furniture.



Sculpture

Featured Project : Prelude Series

Fabrication Method: Stainless Steel & Fiberglass

Explore our diverse range of artistic offerings, providing both original and made-to-spec private and public art services in a variety of materials, including fiberglass, marble, bronze, and stainless steel. Manifold specializes in crafting designs for private gardens, landscapes, and institutional public street fronts. Comprising international design award laureates and skilled fabricators, our team ensures the realization of artistic visions with precision and expertise.



SBC

HSBC

HSBC

HSBC



Featured Project : The Oval - The Winslow
Year : 2023





Millwork

Fabrication Method : CNC & Robotics

Specializing in advanced 3D capabilities. Our dedicated team excels in transforming innovative architectural concepts into tangible reality. Experience the fusion of creativity and craftsmanship with our millwork services.





Decorative Panel

These exclusive wood veneer finishes are available in Oak and Walnut Veneer. Designs are also provided in four sizes which could be a mix of single selection. Custom profile is available upon on request.

Sizes: up to 9' / 2700mm



Showroom

Located in Markham, Ontario, our showroom invites you to explore our exquisite offerings. We offer complimentary in-house consultation, where our experts guide you through the possibilities. And yes, enjoy a cup of coffee on us. Book your consultation conveniently online at www.manifoldlab.ca, and let us turn your visions into reality.

2710 14th Ave. Markham, ON L3R 0J1

CATALOGUE

Manifold Lab Inc.
info@manifoldlab.ca
www.manifoldlab.ca
+1 416 496 1516
2710 14th Ave. Markham, ON L3R 0J1

©2024 by Manifold Lab